

Sillón tejido “Nido” / hand-woven armchair

C251T

OUT

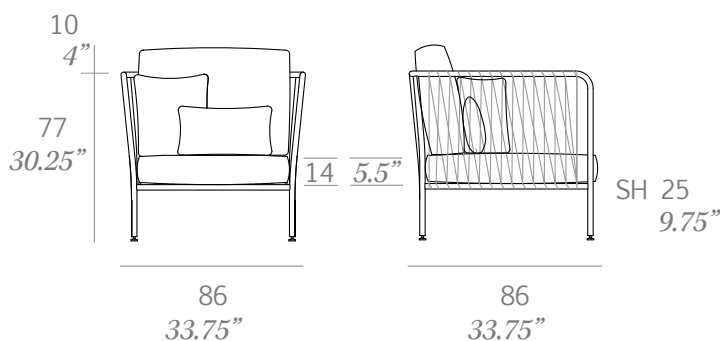


Sillón fabricado en tubo de acero, acabado en pintura bicapa zinc y polvo de poliéster. Acabado tejido utilizando cuerda de poliéster trenzada de alta resistencia de 24 mm de sección.

No se recomienda su uso en zonas cercanas al mar.

Armchair made of steel tube, and finished with a double layer of zinc and polyester powder. Hand-woven finish using braided rope made of high resistance polyester, 24 mm/0.94" thick. Its use is not recommended in coastal areas.

Medidas / Dimensions	86 x 86 x 77 cm 33.75" x 33.75" x 30.25"
Peso / Weight	30 kg / 66 lb
Volumen / Volume	0,66 m ³ / 24 ft ³



Estructura / frame



100 white



101 black



107 brown

Cuerda de poliéster / polyester rope



500 white



502 grey



501 black



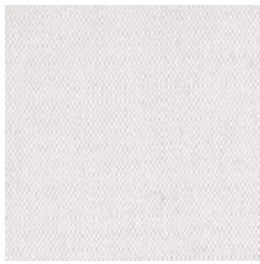
507 taupe



508 blue grey

Serie 6 - Confección / cushions

Tempotest®



sand C



sand GC



sand G



sand NE



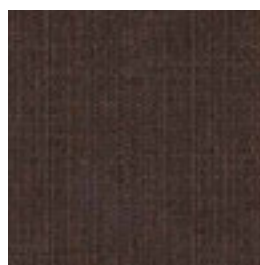
sand A



sand BO



sand BN

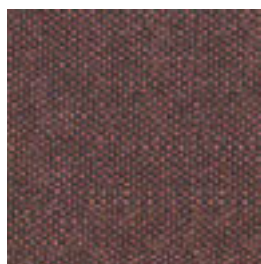


sand M

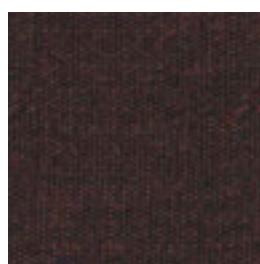
Seasons



seasons RC



seasons RM



seasons RO



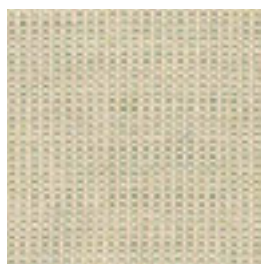
seasons AC



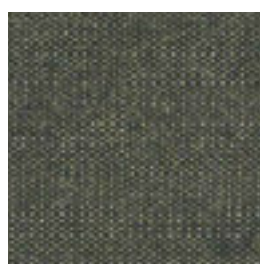
seasons AM



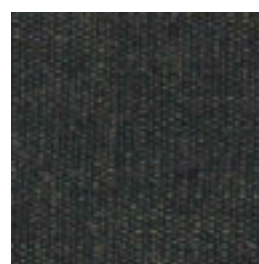
seasons AO



seasons VC



seasons VM



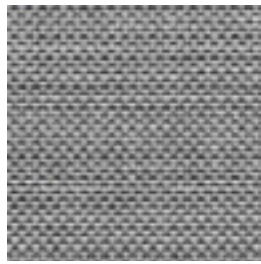
seasons VO

Serie 2 - Confección / cushions

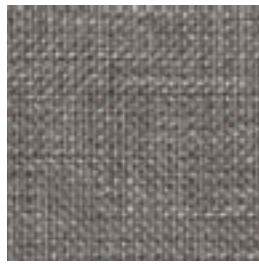
Dolce Outdoor



dolce 07



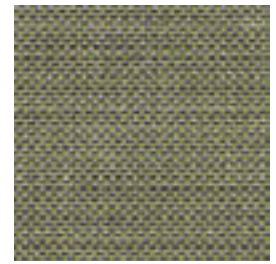
dolce 51



dolce 54



dolce 53



dolce 30

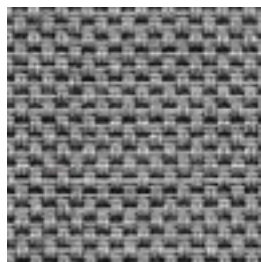


dolce 49

Duo Outdoor



duo 07



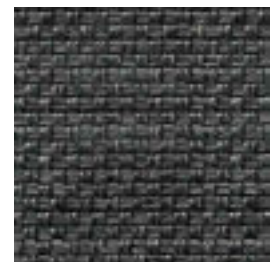
duo 51



duo 54



duo 14



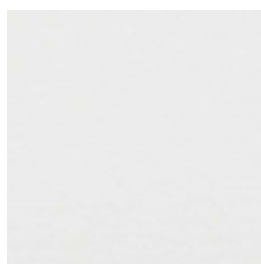
duo 53



duo 05

Serie 4 - Confección / cushions

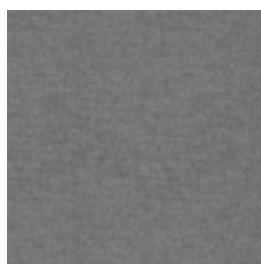
Silvertex™



silvertex ice



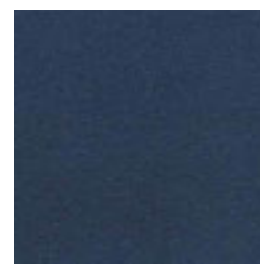
silvertex plata



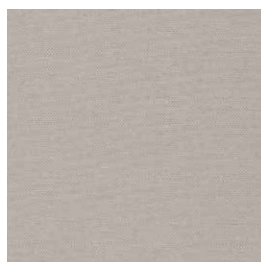
silvertex sterling



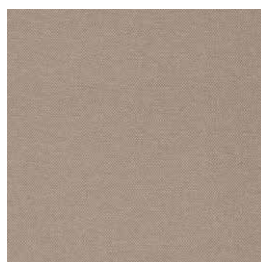
silvertex titanium



silvertex jet



silvertex macadamia



silvertex sandstone

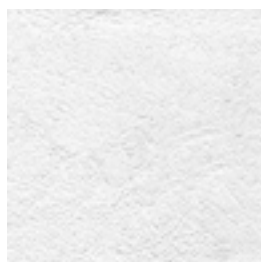


silvertex taupe



silvertex meteor

Zander®



zander pure white



zander auster